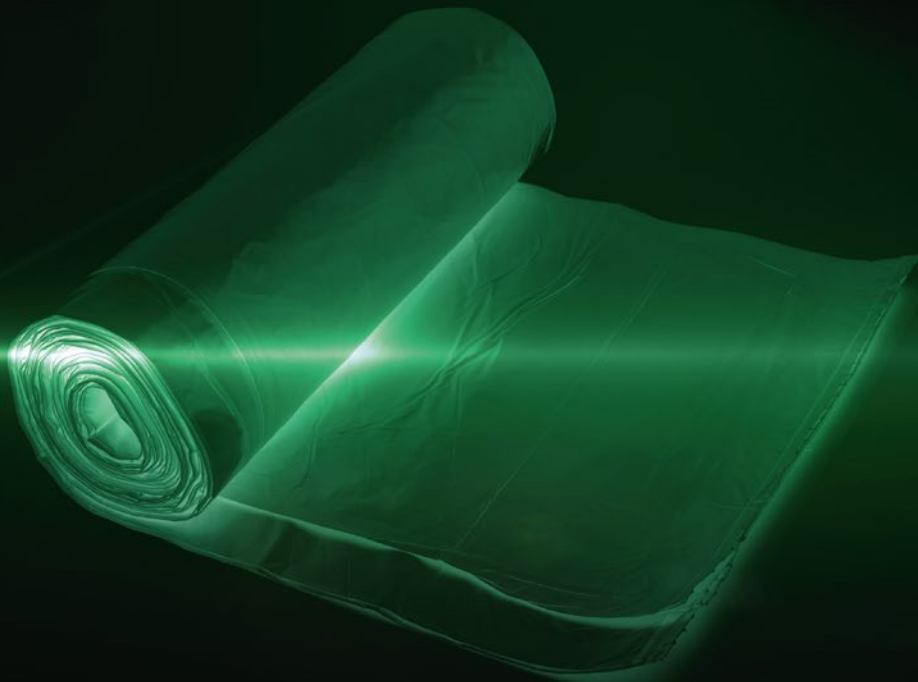


High quality Recyclates

for film extrusion



Possible applications for our recyclates in the film extrusion industry

... or are you still using prime virgin?

RSH film grades are used to produce a wide variety of product and transport packaging, such as hoods, outer packaging or bags.

All our recyclates are:

- + Laboratory tested
- + With certificate of analysis per batch
- + Available with technical data sheets & delivery specifications
- + Reproducible
- + Packed in big bags, octabins or silos

We have been carrying out high-quality toll processing in closed loops for many well-known customers for decades.



Product range of LDPE, LDPE (pcr) & HDPE recyclates

Our recyclates for film extrusion

		Grade name	% PIR/PCR	Other Colors	MFR (ISO 1133) g/10min	Density (ISO 1183) g/cm ³
HDPE	Regranulate	HDPE 5005 F blue PCR	0/100		0,4 - 0,9 (190 °C / 5 kg)	960
LDPE	Regranulate	RSH LDPE 2005 PCR transparent	0/100		0,2 - 0,5 (190 °C / 2,16 kg)	930
LDPE	Regranulate	RSH LDPE 2008 PCR grey	0/100		0,4 - 0,8 (190 °C / 2,16 kg)	955
LDPE	Regranulate	RSH LDPE 2009 PCR translucent	0/100	mixed color	0,5 - 0,9 (190 °C / 2,16 kg)	925
LDPE	Regranulate	RSH LDPE 2010 PCR translucent	0/100		0,5 - 1,0 (190 °C / 2,16 kg)	925
LDPE	Regranulate	RSH LDPE 2012 PCR natural-translucent	0/100		0,5 - 1,2 (190 °C / 2,16 kg)	925
LDPE	Regranulate	RSH LDPE 2012 PCR + natural-translucent	0/100		0,5 - 1,2 (190 °C / 2,16 kg)	925
LDPE	Regranulate	RSH LDPE 2012 PCR A natural-translucent	0/100		0,5 - 1,2 (190 °C / 2,16 kg)	925
LDPE	Regranulate	RSH LDPE 2012 PCR A + natural-translucent	0/100		0,5 - 1,2 (190 °C / 2,16 kg)	925
LDPE/ LLDPE	Regranulate	RSH LDPE/LLDPE 2017 PCR natural-translucent	0/100		1,2 - 2,0 (190 °C / 2,16 kg)	925
LDPE/ LLDPE	Regranulate	RSH LDPE/LLDPE 2017 PCR A natural-translucent	0/100		1,2 - 2,0 (190 °C / 2,16 kg)	925
LDPE	Regranulate	RSH LDPE 2010 F transparent	100/0	white, mixed color	0,5 - 1,0 (190 °C / 2,16 kg)	920
LDPE	Regranulate	RSH LDPE 2010 F transparent with low EVOH	100/0		0,5 - 1,0 (190 °C / 2,16 kg)	935
LDPE	Regranulate	RSH LDPE 2020 F transparent	100/0	white	1,0 - 2,0 (190 °C / 2,16 kg)	925
LDPE	Regranulate	LDPE Regranulate whitish with low HD + PP	100/0		0,7 - 2,5 (190 °C / 2,16 kg)	930

Ask about other standard or tailor-made recyclates for your industry or processing method

**Automotive
Construction
Packaging
Consumer
goods**





Recyclates from selected material streams

You have the choice



From post industrial waste

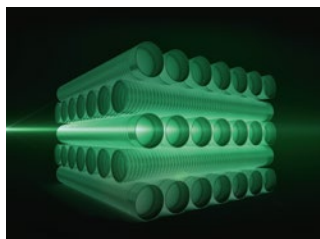
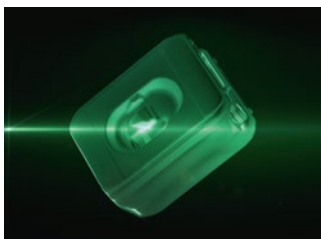
- + Clean and pure raw material base
- + Plain surfaces
- + Barely perceptible odor
- + Constant processing
- + Good colorability
- + Narrow tolerances



From washed post-consumer waste

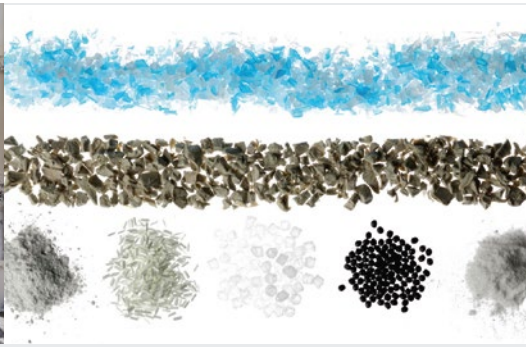
- + Used film as raw material base
- + Intensive washing process for plainer surfaces
- + Good processability
- + Constant property levels
- + Standard and premium grades depending on requirements
- + Good overdyability

Blow
molding
Extrusion
Injection
Film



We stand for a true circular economy

Recyclates – „Made in Germany“



Production

- Batch homogenization up to 25 tons
- Storage in insulated warehouses
- Production on single- and double screw extruders
- Experienced employees with a lot of know-how
- Incorporation of additives, stabilizers and fillers

Development

- Tailor-made according to customer requirements
- In-house technical center with laboratory extruders
- Planning, testing and implementation of projects

Testing options laboratories

- Physical properties
- Mechanical properties
- Thermal properties
- Raw material analysis

You are on the safe side with us



Co₂ Balancing

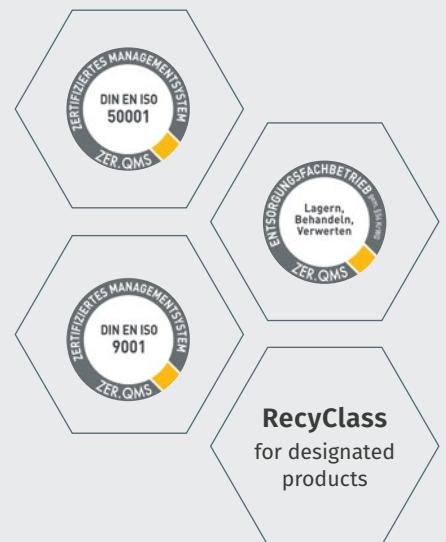
CO₂ Certificates per grade on request

Determination of the GWP (Global Warming Potential) for 1 kg of the recyclate



We have been a driving force in the circular economy since 1958

At RSH we focus on energyefficient production and the protection of the environment



www.rshpolymere.de